



CENTURY ADDIS REAL ESTATE

INTERIOR DESIGN

APARTMENT TYPE A

FUNCTIONAL LAYOUT

- ◆ Study of functional layout in relation to the design approach and the dwellers comfort based on their daily needs and major activities
- ◆ Project Information:
Owner: Century Addis Real Estate
Project: Mixed Use
Location: Addis Ababa, Bole Sub-City, Wxx
Plot Area=1408 sqm
Estimated Built-up Area=1042sqm
- ◆ Specifications Apartment A:
Living Room: 19.00 sqm
Kitchen-Dining Area: 23.00 sqm
Kitchen: 10.00 sqm
Bathroom: 4.00 sqm
Common Bathroom: 6.00 sqm
Master Bathroom: 5.00 sqm
Walk in Closet: 6.00sqm
Master Bedroom: 18.00
Bedroom 1: 15.00 sqm
Bedroom 2: 14.00 sqm
Laundry: 4.00 sqm
Balcony: 4.00 sqm



DOLOR SIT AMET

TYPICAL FLOOR PLAN

To design any residential spaces with effective spaces planning and living environment we need to take in consideration all aspects needed such as prospects, antropomethrics and argonome-thrics, ventilation, daylighting, oriantation, color, textures etc.

DESIGN AIM

With multiple layers of design Ideas, the aim is to have some tidiness to it. In taking time with the process and selecting items thoughtfully, so that every piece has a purpose and a place. The size and location of windows, the position of built-in lighting and the placement of lamps and the rest of primary consideration in Interior Design in curating users life with optimized satisfaction.

LIVING ROOM

Typical Furniture group in the living room with a primary conversation sofa, a coffee table, Artwork on the wall, flower pots and a TV set on the opposite side of the wall and a floor lamp.



CONCEPTUAL SKETCH



DINING AREA

DESIGN AIM

- ◆ Dining Area plays the major Role in harmonizing the Apartment with his own location.
- ◆ With the Dining space was possible to interact as a transitional space creating a link between kitchen and living activities



DESCRIPTION OF DESIGN

The dining-room is very interesting. It has a wall harmonized with canvas artwork and a suspended gypsum ceiling and pending lights above the wooden oak table. At the other side of the table we find a Modern Kitchen with bright and appealing color and texture to make the space spacious.



CONCEPTUAL SKETCH

TITLE HERE

Fig. A) Two Seater Playback Sofa

Fig. B) Brio Center Table

Fig. C) Three Seater Playback Sofa

Fig. D) Nomade floor lampe

Selection of Furniture based on the Functional layout of the space, Room scale (To determine Size), desired Color theme etc.



FIG. A



FIG. B



FIG. C



FIG. D

Living Room & Furniture



Nomade suspension



Globo Tv composition



CONCEPTUAL SKETCH

LIVING & DINING MATERIAL

01

Warm environment green Surface combined with White surfaces and natural materials

02

White Surface To maximize the Interior Light Intensity as well as to introduce welcoming touch.

03

Natural Wooden Tile to bring a looking great as well as a unifying theme, feels with cohesive appearance



04

With the aim for Uniqueness the Idea is to pick a color & a Texture which is friendly, but most importantly not to be bound by the traditional color schemes of the current trend.

05

Each can be truly unique, as materials are combined and then cut before installation. Able to customize the patterns, materials, grains, and coloring of parquet flooring making suitable in fitting with the surrounding.

DESIGN AIM

KITCHEN

01

When we design a kitchen, we also consider the context where it will be installed, taking care over every tiniest detail to ensure it fits perfectly into your world. This is essential to create a unique kitchen, in harmony with space and time.

02

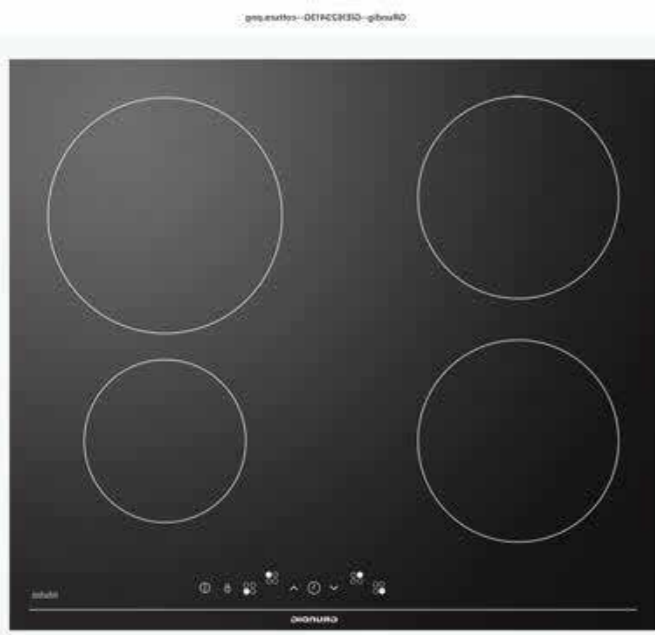
Design reflects in attention to details and solutions allowing a high degree of personalisation.

03

Harmonized design with adjacent spaces such as the Living and Dining spaces to bring the friendly and comfortable environment



KITCHEN EQP.



Grundig GIEI623413G



Whirlpool AMW499/IX



VIEW FROM DINING



CONCEPTUAL SKETCH



Kitchen DaAEG RTB91431AW Class A+++ White



Kitchen Detail



CONCEPTUAL SKETCH

CERAMIC TILE



CERAMIC TILE

COMBINED WOODEN PALATE



COMBINED WOODEN PALATE

GREEN TONE COLOR PALATE



GREEN TONE COLOR PALATE

KITCHEN MATERIAL

Selecting a color scheme allows you to create a room that has a unifying theme, feels cohesive and looks great.

It also keeps you on track to make sure everything goes well together, so you don't end up with a piece that doesn't fit

KITCHEN COLOR COMBINATION

DESIGN AIM

The aim is to have some tidiness thoughtfully, so that every piece has a purpose and a place. The size and location of windows, the position of built-in lighting and the placement of lamps and the rest of primary consideration in Interior Design in curating users life with optimized satisfaction. Each can be truly unique, as materials are combined with each movable or Built-in Furnitures. Able to customize the patterns, materials, grains, and coloring of parquet flooring making suitable in fitting with the surrounding.

MASTER BEDROOM



CONCEPTUAL SKETCH



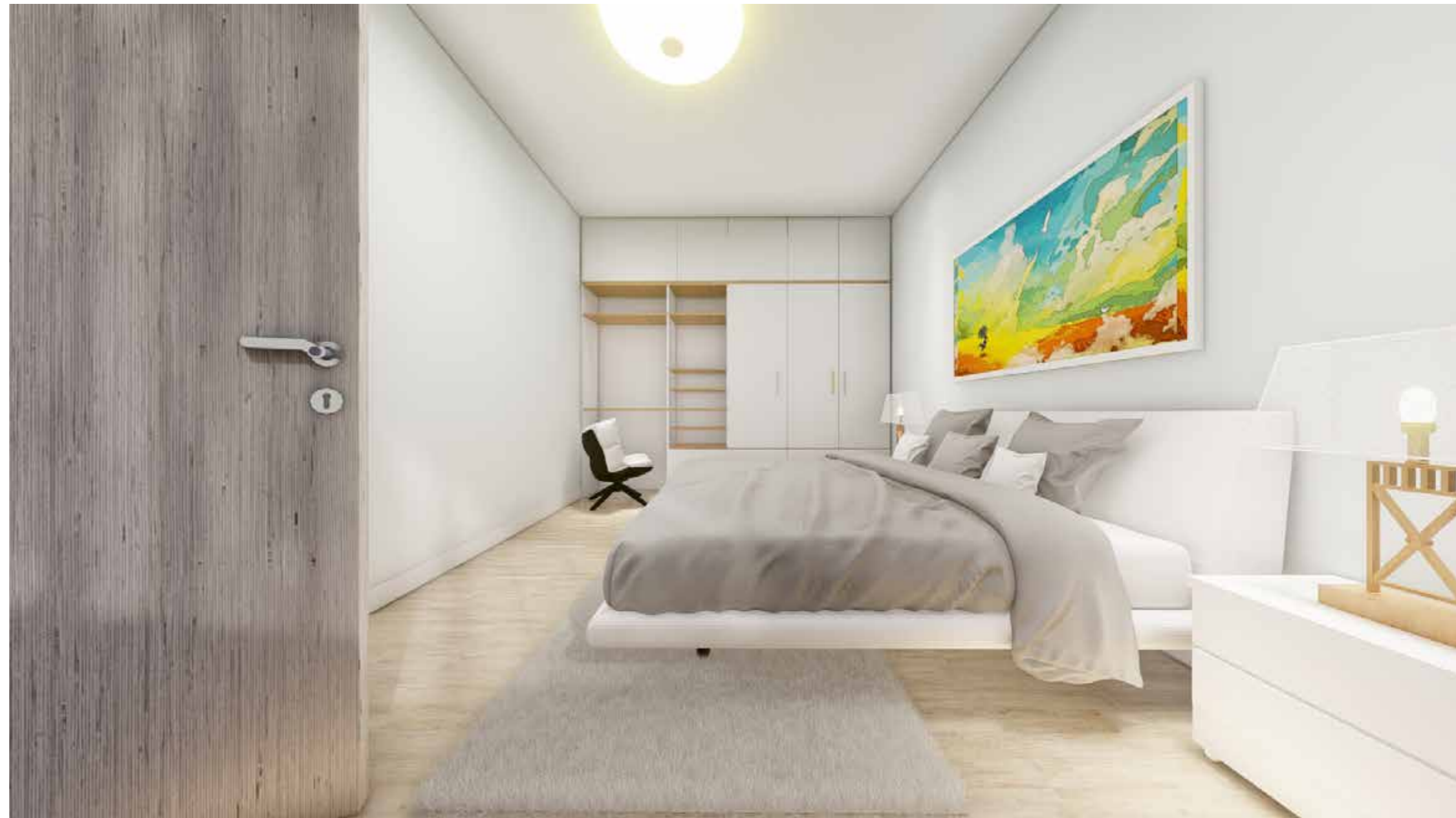
DESIGN AIM

The aim is to have some tidiness thoughtfully, so that every piece has a purpose and a place. The size and location of windows, the position of built-in lighting and the placement of lamps and the rest of primary consideration in Interior Design in curating users life with optimized satisfaction. Each can be truly unique, as materials are combined with each movable or Built-in Furnitures. Able to customize the patterns, materials, grains, and coloring of parquet flooring making suitable in fitting with the surrounding.

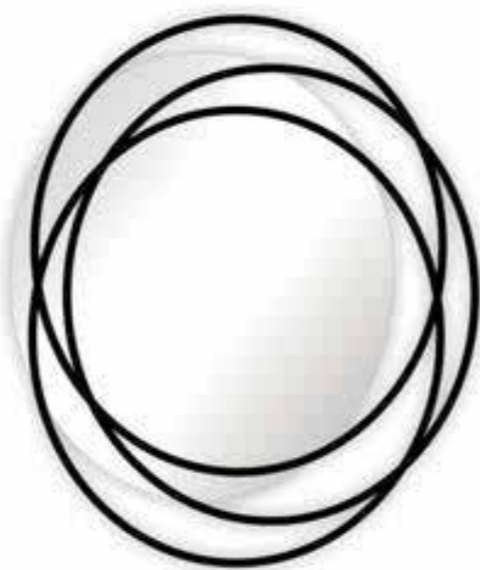
BEDROOM 1 & 2



CONCEPTUAL SKETCH



Lorem ipsum



TITLE HERE

Fig. A) Vista Bronze Mirrors

Fig. B) Spoutnik Lounge

Fig. C) Sanur Lampe Floor Lamp

Fig. D) Integro Mirror Bedrooms

Fig. E) Globo Commode

Selection of Furniture based on the Functional layout of the space, Room scale (To determine Size), desired Color



FIG. C

FIG. D

FIG. E

BedR. Furniture

BED FOR BEDROOM 1 & 2



FIG. A

ARM CHAIRE



FIG. B

TITLE HERE

Fig. A) Profile Cuir Bed-Single Bedroom
Fig. B) Pianca Arm Chair
Fig. Vanity Bed-Three Bedroom
Fig. D) Mousmosak Carpet

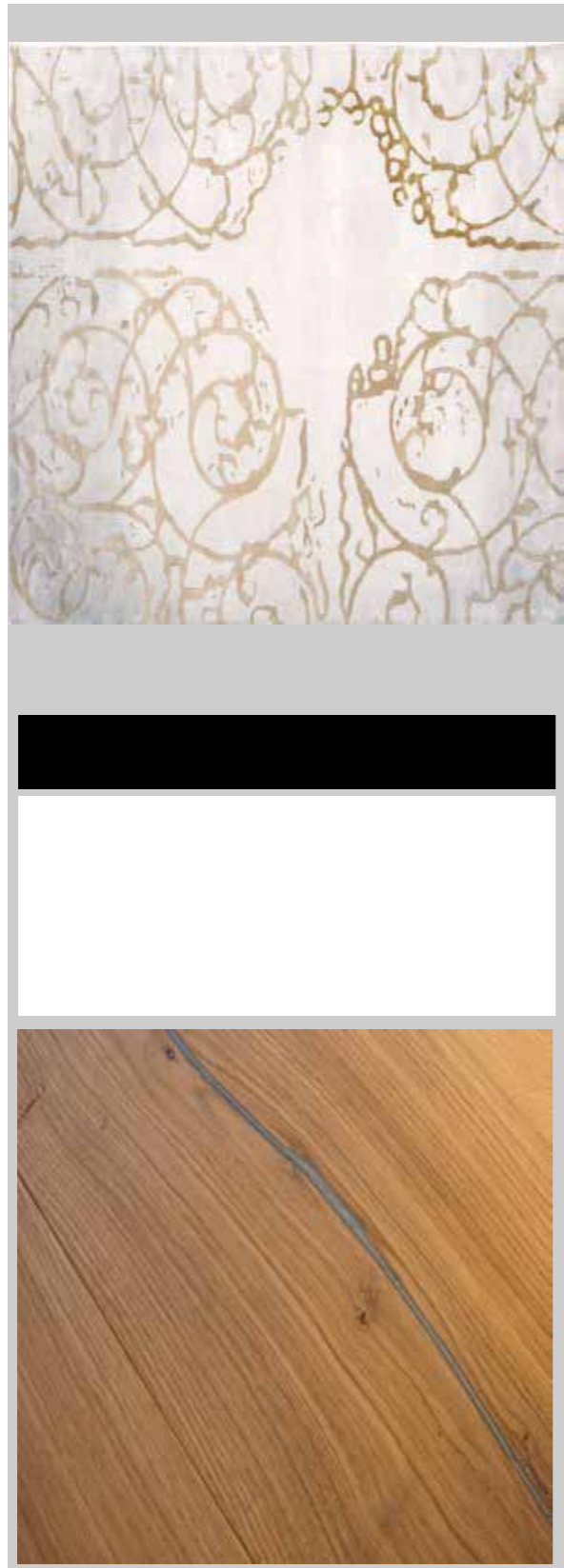
TITLE HERE

Selection of Furniture based on the Functional layout of the space, Room scale (To determine Size), desired Color theme etc.

FIG. C



BED FOR MASTER BEDROOM FIG. C & D



7236 CHI MATT LADY BALANCE



8394 VIT POESI MATT LADY BALANCE



7555 SOFT MINT MATT LADY BALANCE



7163 MINTY BREEZE MATT LADY BALANCE



6325 BALANS MATT LADY BALANCE



5180 OSLO MATT LADY BALANCE



5362 FUSION MATT LADY BALANCE



6084 SJÖSMARAGD MATT LADY BALANCE

BEDROOM MATERIAL

Lorem ipsum dolor sit amet, consectetur adipiscing elit, sed diam nonummy nibh euismod tincidunt ut laoreet dolore magna aliquam



CONCEPTUAL SKETCH OF BEDROOM 1

DESIGN AIM

BATHROOM

01

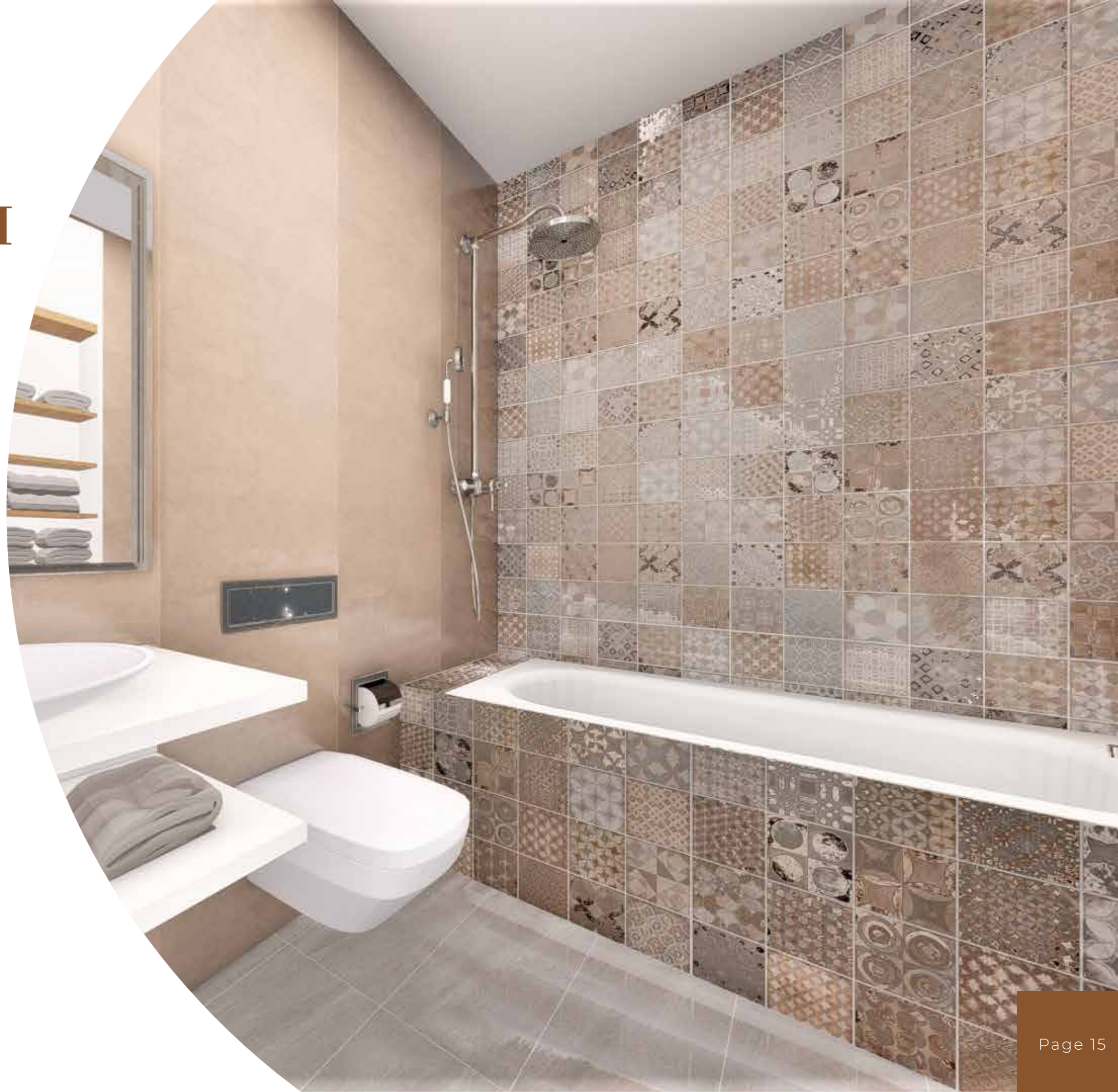
The Bathroom design is centered around a simple, clean, minimalistic look and feel. Think geometric shapes and patterns, clean lines, minimal colors and mid-century furniture to meet modern sanctuary for function and relaxation.

02

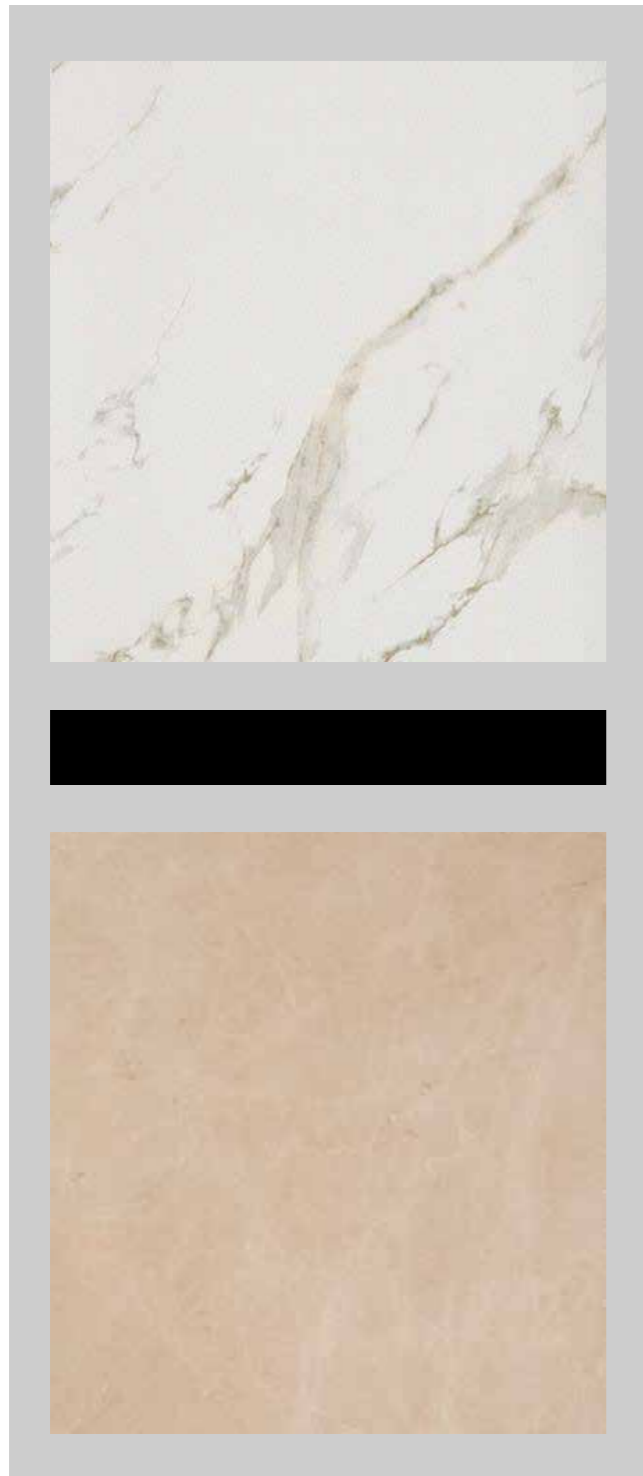
Since bathrooms are spaces that we use everyday, designing them to suit our personal style is important. From bright and cheery and elegant,

03

These modern bathroom design ideas transform utilitarian spaces into relaxing and refreshing escapes for each dwellers.

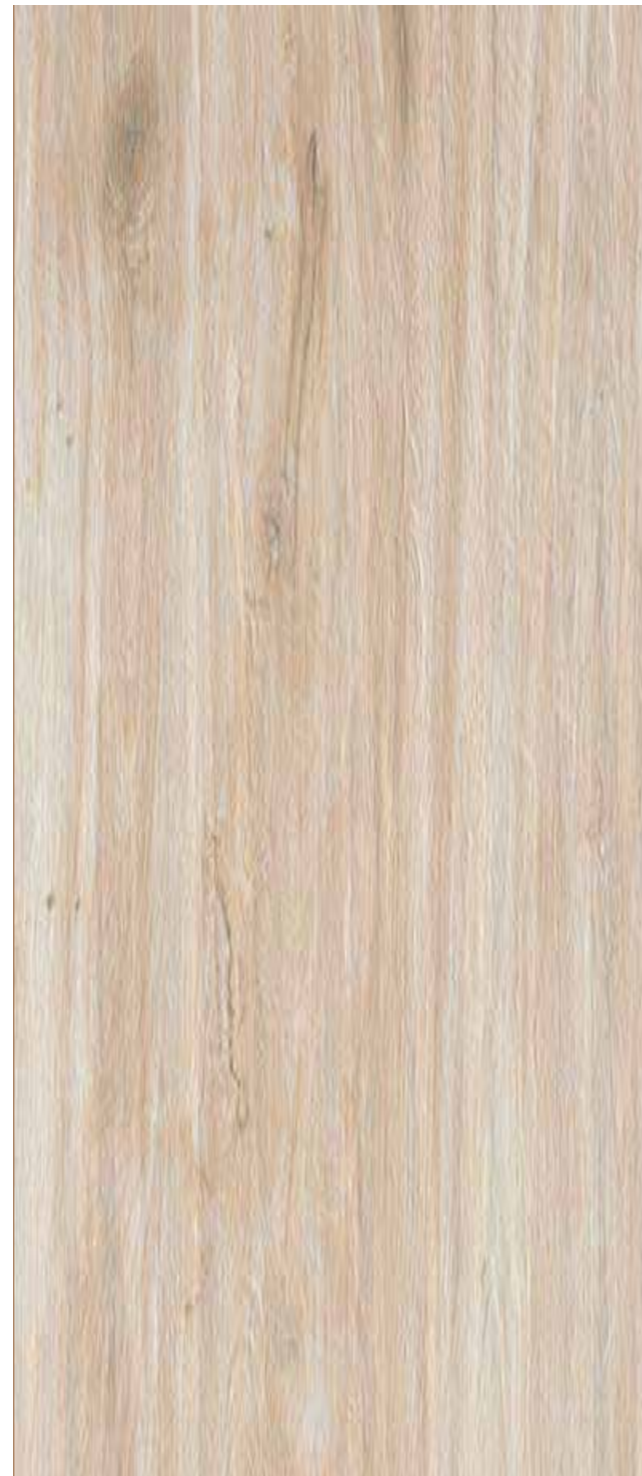


CERAMIC TILE



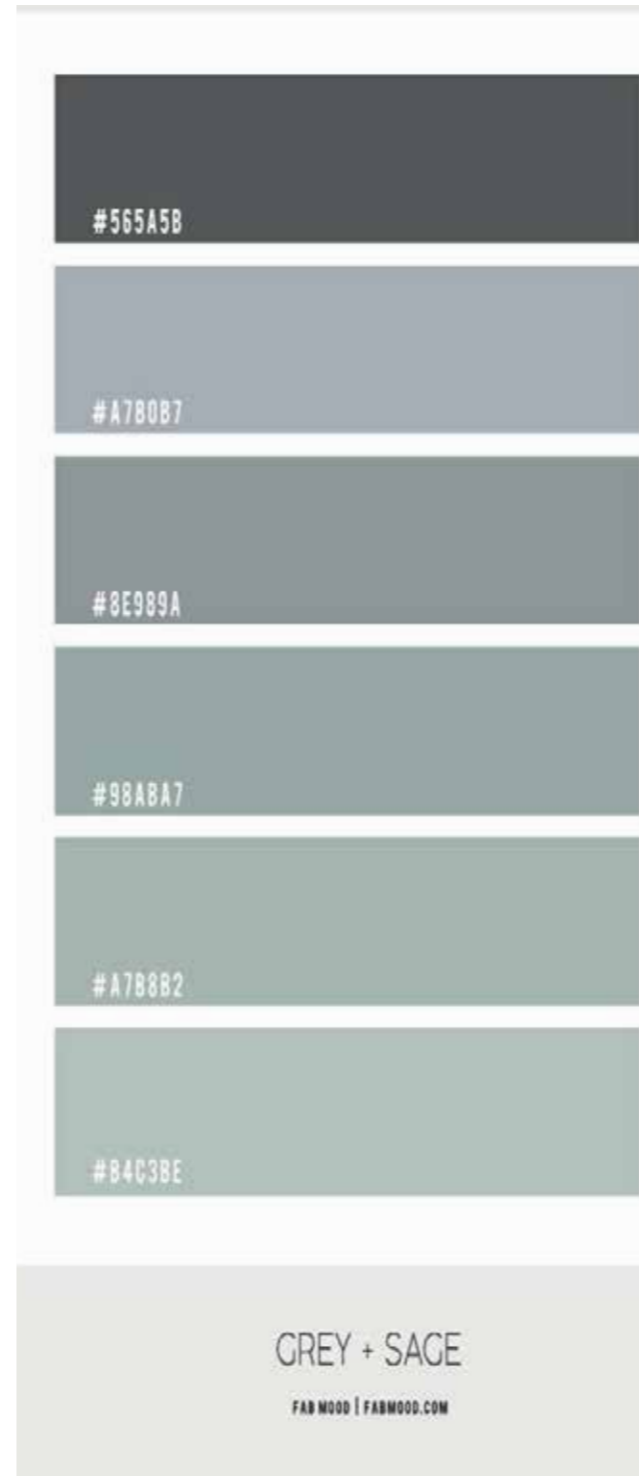
CERAMIC TILE

COMBINED WOODEN PALATE



COMBINED WOODEN PALATE

GREEN TONE COLOR PALATE



GREEN-GREY TONE COLOR PALATE

BATHROOM MATERIAL

Selecting a color scheme allows you to create a room that has a unifying theme, feels cohesive and looks great.

It also keeps you on track to make sure everything goes well together, so you don't end up with a piece that doesn't fit

BATHROOM COLOR COMBINATION

DESIGN AIM

The beauty of bedroom is not only just due to its designing and architecture; wardrobes give an aesthetic beauty to the bedrooms. They give more area for storing huge & small items such as Clothes, Bed Sheets, Curtains, etc. in an organized manner.

WARDROBE

I



CONCEPTUAL SKETCH



Open Wardrobe

DESIGN AIM

There is a lot of material available in the market from which you can choose the closets which are modern in look and have an elegant wardrobe design with ample amount of space. Wardrobes are actually an idea which you can modify in any way. They will make your simple cupboards look more special and elegant

WARDROBE II



CONCEPTUAL SKETCH



Closed Wardrobe



CENTURY ADDIS REAL ESTATE
INTERIOR DESIGN
APARTMENT TYPE A